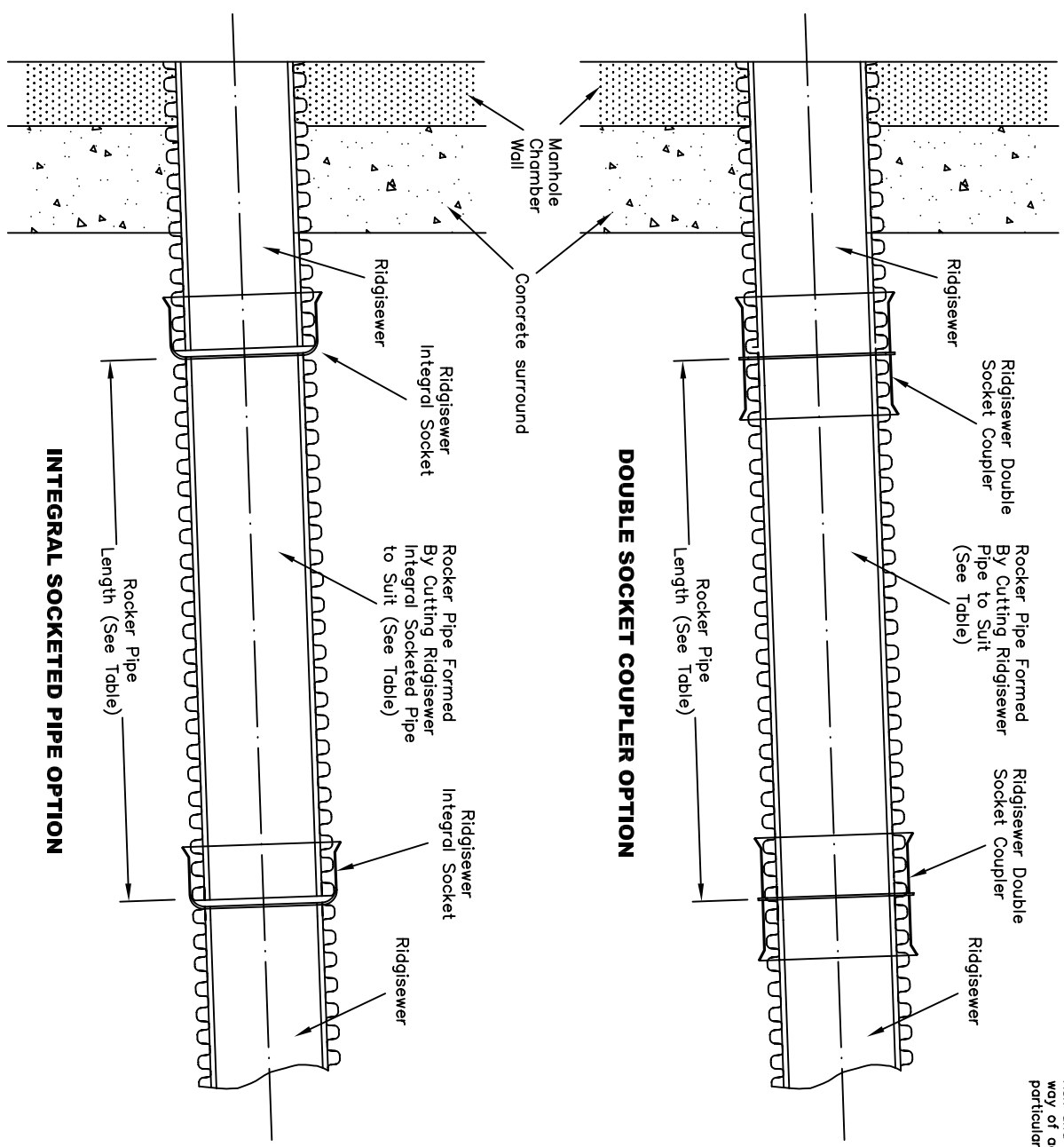


This information is for guidance purposes only. Please note that we may change the information from time to time, for a variety of reasons. This information cannot be relied upon to determine the suitability or installation requirements of our products for your particular site conditions or application; expert advice is required in this respect. Final determination of the suitability of any information or material for your intended use and manner of use is your sole responsibility and you must assume all risk and liability in this regard. This information is not intended to have any legal effect, whether by way of advice, representation or warranty. However, our technical staff will be happy to discuss your particular application and site conditions in further detail.

Sewers For Adoption, Edition 5; Clause 4.6.6 recommends the length of rocker pipe required adjacent to structures. Detailed in the table below:

Pipe Diameter (mm)	Min. Rocker Pipe Length, L (m)
150 to 600	0.600
675 to 750	1.000
Over 750	1.250



Polypipe Civils believe that the Ridgisewer Drainage System reduces the effect of differential settlement, rocker pipes would only be required where abnormal settlement is expected. However provisions outlined in Sewers For Adoption, Edition 5 should be followed for adoptable sewer systems. Rocker pipe requirements are given in Clause 4.6.6. In the absence of a specification we would draw your attention to BS 5955: Part 6: 1980; "Plastic Pipework (thermoplastic materials) Part 6 – Code of practice for the installation of plasticized PVC pipework for gravity drains and sewers." Clause 7.3 states "The provision of at least one flexible joint is recommended within 300mm of the external face of the wall of any building and at each point of all manholes and inspection chambers. Where abnormal settlement is expected, it is desirable to incorporate two flexible joints to form a 'rocker' length of pipe."

Notes:

- 1.- All dimensions are nominal and in millimetres.
- 2.- All temporary and enabling works by constructor.
- 3.- This document is intended for guidance only.
- 4.- Additional rocker pipes may be necessary to accommodate transition of pipe gradient.
- 5.- Seals are required to form an air-tight system.
- 6.- This document is uncontrolled and updates will not be issued automatically.

Polypipe Civils Ltd.
Civils & Agricultural Products
 UNION WORKS, BISHOP MEADOW ROAD,
 LOUGHBOROUGH, LEICESTERSHIRE, LE11 5PE,
 TEL: 01509 615100 FAX: 01509 615205

DRAWING STATUS: **FOR INFORMATION**

DRAWING TITLE: **RIDGISEWER ROCKER PIPE DETAIL FOR PIPES UP TO 600mmØ**

PROJECT REF: **16053D4_REV_A.DWG**

SCALE: **NOT TO SCALE**

CAD FILE: **16053D4**

DRAWING No. **16053D4**

REV **A**

A	Integral socketed pipe option added	01/08/02
REV	CHANGES	DATE
	DRAWN BY SH/IDA	26/06/02
	CHECKED	
	DIMENSIONS IN MILLIMETRES UNLESS OTHERWISE STATED	