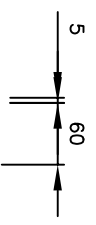
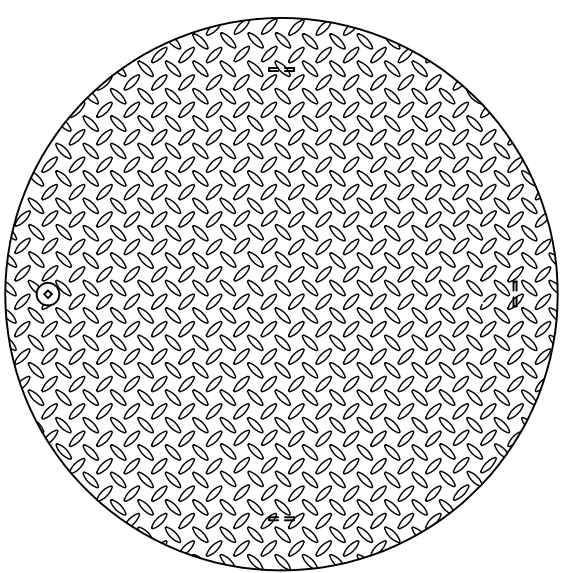
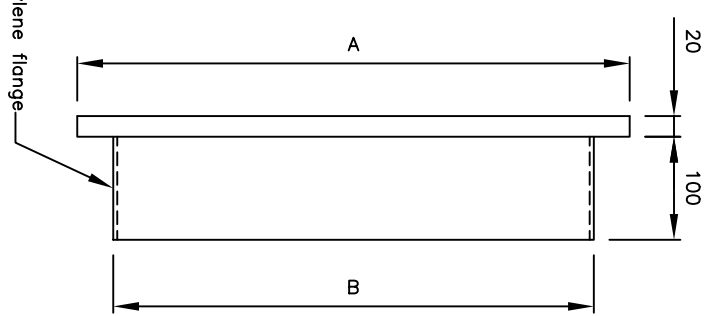
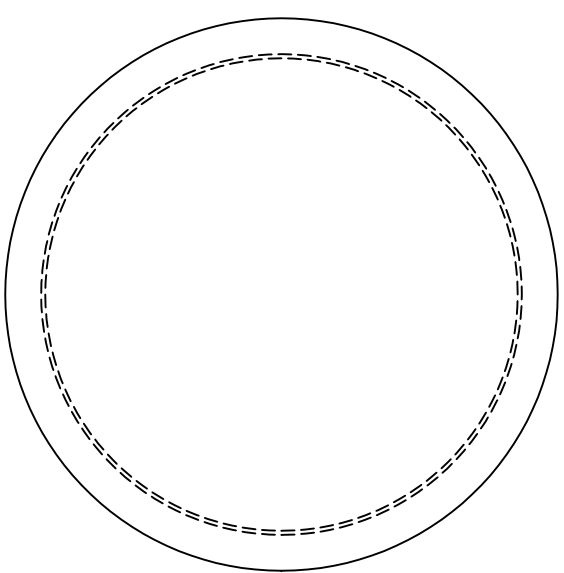


STEEL LID



POLYETHYLENE LID



- NOTES:
- 1.- All dimensions are nominal and in millimetres.
 - 2.- This document is uncontrolled and updates will not be issued automatically.
 - 3.- Please not that these lids are not suitable for loaded applications.

This information is for guidance purposes only. Please note that we may change the information from time to time, for a variety of reasons. This information cannot be relied upon to determine the suitability or installation requirements of our products for your particular site conditions or applications; expert advice is required in this respect. Final determination of the suitability of any information or material for your intended use and manner of use is your sole responsibility and you must assume all risk and liability in this regard. This information is not intended to have any legal effect, whether by way of advice, representation or warranty. However, our technical staff will be happy to discuss your particular application and site conditions in further detail.

	Dimension A	Dimension B
Cover to fit 400mm RIDGIDRAIN manhole/catchpit	460	400
Cover to fit 450mm RIDGIDRAIN manhole/catchpit	514	450
Cover to fit 500mm RIDGIDRAIN manhole/catchpit	571	500
Cover to fit 600mm RIDGIDRAIN manhole/catchpit	675	592
Cover to fit 750mm RIDGIDRAIN manhole/catchpit	883	766
Cover to fit 900mm RIDGIDRAIN manhole/catchpit	1040	914
Cover to fit 1050mm RIDGIDRAIN manhole/catchpit	1215	1065

FOR INFORMATION

DRAWING STATUS:		PROJECT REF:		SCALE:		DRAWN BY:		DATE:	
DRAWING TITLE		16120D1.DWG		NOT TO SCALE		IDA		07/05/02	
MANHOLE LID DETAILS		POLYPIPE DRAWING No.		CHECKED					
		TD/16120/D1		REV				DIMENSIONS IN MILLIMETRES UNLESS OTHERWISE STATED	

Polypipe Civils Ltd.
Civils & Agricultural Products
 UNION WORKS, BISHOP MEADOW ROAD,
 LOUGHBROUGH, LEICESTERSHIRE, LE11 5RE,
 TEL: 01509 615100 FAX: 01509 615205